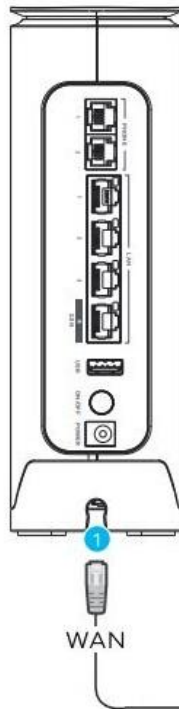







**Zyxel EE3301-T0**

**Quick Start Guide**

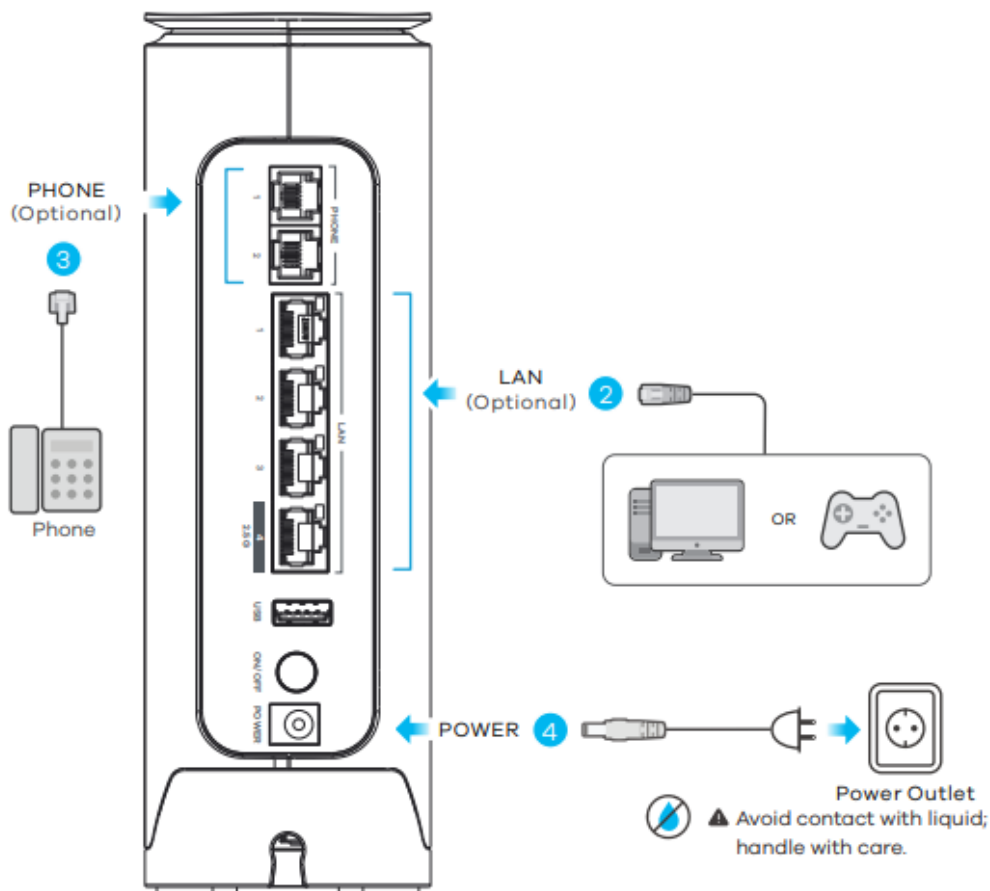
## Cabling Setup



|   |   |
|---|---|
| <br>POWER     | <p><b>Green</b> On - The power is on and the system is ready.</p> <p><b>Red</b> On - The Device detects a system error.</p> <p><b>Blinking</b> - The firmware is upgrading.</p> <p>Off The power is off.</p>  |
| <br>STATUS   | <p><b>Green</b> On - The WAN connection is active and ready for use.</p> <p><b>Blinking</b> - The telephone is off-hook or there is an incoming call.</p> <p><b>Amber</b> On - The VoIP service is enabled, but the VoIP account registration has failed.</p> |
| <br>INTERNET | <p><b>Green</b> On - The Internet is ready.</p> <p><b>Blinking</b> - The Device is transmitting or receiving data.</p> <p><b>Red</b> On - The Device attempts to get an IP address but fails.</p> <p>Off The Internet is not ready.</p>                       |

1. Use an Ethernet cable to connect the **2.5G WAN** port to the **ONT (WAN port located underneath the device)**

## Cabling Setup



2. Connect a computer to the LAN port using an Ethernet cable (optional)
3. Connect a phone to the phone port using the phone cable (optional)
4. Connect the power cable to the Zyxel Device and press the power button on

# WiFi Connection

## Using SSID




The SSID and Wireless Key are on the device label.

On your device, find this SSID and enter the Wireless Key to connect.

## Using WPS



### Wi-Fi LED Indicator Table

|  |              |  |
|--|--------------|--|
| <br>Wi-Fi | <b>Amber</b> | <b>Blinking</b> - The Device is connecting to the Wi-Fi clients using WPS.   |
|  | <b>Green</b> | <b>On</b> - The Wi-Fi is ready.  |
|  | <b>Off</b>   | <b>Blinking</b> - The Device is transmitting and receiving data.<br>Both the 2.4G and 5G interfaces were disabled. |

Press the WPS button until the 2.4G and 5G LED's light up amber